



**CONDUIT SEALING DEVICES OF AN
AMAZING SIMPLICITY WITH AN
OUTSTANDING PERFORMANCE**

slipsil

BEELE Engineering and CSD International have been involved with fire, water and gas tight sealing for more than 30 years. We have developed and tested products proven to provide the utmost in sealing protection around the world. To receive our complete civil construction and/or marine products catalogues, please contact your distributor or local representative.

distributed by:

BEELE Engineering bv - CSD International bv
Beunkdijk 11 - 7122 NZ AALTEN - THE NETHERLANDS
Tel. +31 543 461629 - Fax +31 543 461786 - E-mail: info@beele.com
Websites: <http://www.actifoam.com>, www.beele.com, www.csdplugs.com, www.firsto.com,
www.rise-systems.com, www.riswat.com and www.slipsil.com

TABLES SLIPSIL® PLUGS EDITION 2/2008

slipsil

**WATER TIGHT
GAS TIGHT
FIRE SAFE**



slipsil

**NEW GENERATION
SEALING DEVICES
BASED ON THE
UNIQUE NOFIRNO
TECHNOLOGY**

slipsil

Websites: <http://www.actifoam.com>, www.beele.com, www.csdplugs.com, www.firsto.com,
www.rise-systems.com, www.riswat.com and www.slipsil.com

Copyright : BEELE Engineering BV/CSD International BV, Aalten, the Netherlands.
Proprietary rights on all drawings and technical data released in this brochure.
© 1997-2008

Edition : February 2008

Note : No part of this publication may be reproduced without explicit written approval of BEELE Engineering BV.

Research & Development : BEELE Engineering BV, Aalten, the Netherlands.

Note : The manufacturer reserves the right to make dimensional and design modifications without prior notification.

® : ACTIFIRE, ACTIFOAM, AQUASTOP, BEEBLOCK, BEELE, BEESEAL, CONDUCTION, CRUSHER, CSD, CSD THE SIMPLE SEAL SYSTEM, DRIFIL, DYNATITE, FIRSTO, FIRUB/NOHAL, FITEFIRE, FIWA, FRR, LEAXEAL, LUMIREFLEC, NOFIRNO, RAPID TRANSIT SYSTEM, RIACNOF, RISE, RISWAT, **slipsil**, flanges **slipsil** plugs, ULEPSI and YFESTOS are registered trade marks of BEELE Engineering BV.

brochure code : slipsil/tb/en

slipsil

Websites: <http://www.actifoam.com>, www.beele.com, www.csdplugs.com, www.firsto.com,
www.nofirno.com, www.rise-systems.com, www.riswat.com and www.slipsil.com

ASK FOR THE SEPARATE BROCHURES ON OUR PRODUCT RANGES:

- * **RISE® MULTI-CABLE TRANSIT SYSTEM**
- * **RISE® SEALING SYSTEM FOR SINGLE AND MULTI-PENETRATIONS FOR PLASTIC AND METALLIC PIPES**
- * **RISE®/ NOFIRNO® MULTI-MIX CABLE AND PIPE TRANSITS**
- * **RISE®-ULTRA SINGLE PLASTIC PIPE PENETRATIONS**
- * **RISWAT® GAS AND WATERTIGHT CABLE AND PIPE DUCTS**
- * **SLIPSIL® SEALING PLUGS FOR PIPE ENTRIES**
- * **DYNATITE® DYNAMIC HIGH PRESSURE SEALS**
- * **BEESEAL® MULTI-PIPE AND CABLE PENETRATIONS**
- * **CSD®-SQ MULTI-CABLE TRANSITS**
- * **ACTIFOAM® TEMPORARY SEALS AND CAVITY SEALS**
- * **FIRSTO® FIRESTOPS FOR CABLE TRAY PENETRATIONS**
- * **NOFIRNO® CAVITY SEALS, COATINGS AND SEALANTS**
- * **ULEPSI® TANK SUPPORTS FOR BITUMEN TANKERS**

ARTIST IMPRESSION OF THE FIRST PHASE OF THE NEW FACTORY NEXT TO OUR R&D CENTRE



- 1) machines specially developed for compounding and processing of rubbers under controlled conditions to obtain optimum quality
- 2) machines specially developed for compounding and manufacturing of all types of sealants under controlled processing
- 3) moisture treatment installation and processing equipment for manufacturing of electrically conductive sealants and rubbers
- 4) a complete line of injection moulding presses ranging from 40 tons up to 400 tons for manufacturing sealing plugs and other rubber components
- 5) a complete line of compression moulding presses up to 300 tons for manufacturing larger type sealing plugs and ULEPSI rubber plates
- 6) processing installation for after-curing of rubber products to obtain the required compression set (long term behaviour)
- 7) extruder line including cooling system and cutting and slitting installation for manufacturing insert and filler sleeves for the RISWAT system
- 8) fully automatic extruder lines with a length of 20 meters, including cooling system and automatic cutting, slitting and sorting installation for manufacturing rubber insert and filler sleeves and rubber strips of the RISE system
- 9) extruder line for manufacturing luminescent profiles and hoses
- 10) line of injection moulding machines ranging from 50 up to 200 tons for manufacturing plates of the ULEPSI tank supports and luminescent YFESTOS floor coverings
- 11) completely equipped die-making shop for the in-house production of all tooling for rubber and plastics manufacturing
- 12) modern laser equipment for engraving the type codes in the dyes for rubber manufacturing and for marking products with bar and 2D-matrix codes
- 13) mixing and airless spraying facilities for the NOFIRNO boards

*Together with highly advanced systems and technologies
we offer highest quality products.*



**YOUR RELIABLE
PARTNERS**



SLIPSIL® SEALING PLUGS: THE NEW GENERATION

slipsil

**LUBRICATE AND
PUSH:
THE PLUG SLIDES IN**



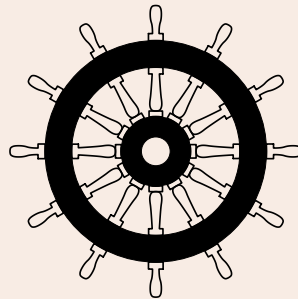
BENEFITS of SLIPSIL® plugs:

IN A WAY THE USE OF SLIPSIL® SEALING PLUGS IS AN ADVANTAGE FOR THE BUILDER, THE INSTALLER AND THE OWNER OF THE INSTALLATION. THE YARD CAN SAVE QUITE SOME WELDING AND CUTTING TIME AND MATERIAL COSTS BY USING SLIPSIL® PLUGS. INNOVATIVE DESIGN: THE PLUG SEALING SYSTEM ALLOWS THE SHORTEST POSSIBLE SLEEVE LENGTH FOR FIRE RATED PENETRATIONS, WHEREBY THE INSULATION IS REDUCED TO AN ABSOLUTE MINIMUM. SLIPSIL® PLUGS CAN BE USED FOR ALL TYPES OF METALLIC AND PLASTIC PIPES! FOR THE INSTALLER IT IS MOST ADVANTAGEOUS THAT THE PLUGS CAN BE INSTALLED IN MINUTES AND DO NOT REQUIRE ANY BOLTING OR OTHER MECHANICAL OUTFITTING. FOR THE OWNER THE SAVINGS ARE IN THE FIELD OF MAINTENANCE COSTS DUE TO THE EXCLUSION OF MECHANICAL STRESSES AND AVOIDING CORROSION PROBLEMS.

SLIPSIL® SEALING PLUGS: THE NEW GENERATION



EC (MED) certificate N° 15823/A1 EC for SLIPSIL® sealing plugs for single and multi-pipe penetrations for steel, stainless steel, copper, GRP and plastic pipes has been issued by BUREAU VERITAS.



- AMERICAN BUREAU of Shipping
- BUREAU VERITAS
- CHINA CLASSIFICATION SOCIETY
- CHINA CORPORATION REGISTER of Shipping
- DET NORSKE VERITAS
- GERMANISCHER Lloyd
- KOREAN REGISTER of Shipping
- Lloyd's REGISTER of Shipping
- Nippon Kaiji Kyokai
- RUSSIAN MARITIME REGISTER of Shipping
- TRANSPORT CANADA
- US COAST GUARD



CERTIFIED BY
THE MAJOR
CLASSIFICATION
SOCIETIES

Note: configurations may differ per classification society.

DYNATITE® SEALING PLUGS: THE NEW GENERATION

TABLES FOR SINGLE SEALING PLUGS

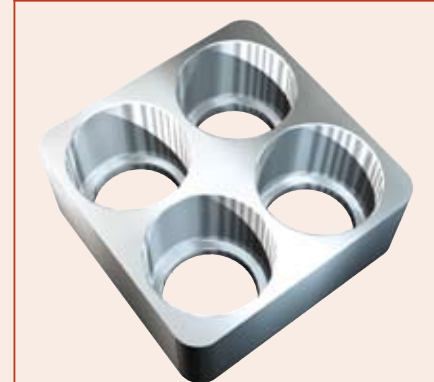
cable/ pipe diameter	plug type	article number	plug length
blind	DT82/0	45.2400	66
32-34	DT82/32-34	45.2420	66
34-36	DT82/34-36	45.2421	66
36-38	DT82/36-38	45.2422	66
38-40	DT82/38-40	45.2423	66
40-42	DT82/40-42	45.2424	66
42-44	DT82/42-44	45.2425	66
44-46	DT82/44-46	45.2426	66
46-48	DT82/46-48	45.2427	66
48-50	DT82/48-50	45.2428	66
50-52	DT82/50-52	45.2429	66
52-54	DT82/52-54	45.2430	66
54-56	DT82/54-56	45.2431	66
56-58	DT82/56-58	45.2432	66
58-60	DT82/58-60	45.2433	66
60	DT82/60	45.2434	66

cable/ pipe diameter	plug type	article number	plug length
----------------------------	--------------	-------------------	----------------



82 SERIES
ID CONDUIT OPENING 81-82.7 MM

module type 180x180	plug type	article number	module height
---------------------------	--------------	-------------------	------------------



module type 180x180	plug type	article number	module height
---------------------------	--------------	-------------------	------------------

DT36x25	series 25	60.5000	76
DT25x32	series 32	60.5001	76
DT16x41	series 41	60.5002	76
DT9x55	series 55	60.5003	76
DT4x82	series 82	60.5004	76

DYNATITE® SEALING PLUGS: THE NEW GENERATION

TABLES FOR SINGLE SEALING PLUGS

cable/ pipe diameter	plug type	article number	plug length
blind	DT25/0	45.0100	54
5-6	DT25/5-6	45.0105	54
6-7	DT25/6-7	45.0106	54
7-8	DT25/7-8	45.0107	54
8-9	DT25/8-9	45.0108	54
9-10	DT25/9-10	45.0109	54
10-11	DT25/10-11	45.0110	54
11-12	DT25/11-12	45.0111	54
12	DT25/12	45.0112	54

25 SERIES

ID CONDUIT OPENING 25-26 MM

cable/ pipe diameter	plug type	article number	plug length
blind	DT32/0	45.0500	54
5-6	DT32/5-6	45.0505	54
6-7	DT32/6-7	45.0506	54
7-8	DT32/7-8	45.0507	54
8-9	DT32/8-9	45.0508	54
9-10	DT32/9-10	45.0509	54
10-11	DT32/10-11	45.0510	54
11-12	DT32/11-12	45.0511	54
12-13	DT32/12-13	45.0512	54
13-14	DT32/13-14	45.0513	54
14-15	DT32/14-15	45.0514	54
15-16	DT32/15-16	45.0515	54
16	DT32/16	45.0516	54

32 SERIES

ID CONDUIT OPENING 31.5-32.5 MM

cable/ pipe diameter	plug type	article number	plug length
blind	DT41/0	45.1000	54
10-11	DT41/10-11	45.1010	54
11-12	DT41/11-12	45.1011	54
12-14	DT41/12-14	45.1012	54
14-16	DT41/14-16	45.1013	54
16-18	DT41/16-18	45.1014	54
18-20	DT41/18-20	45.1015	54
20-22	DT41/20-22	45.1016	54
22-23	DT41/22-23	45.1017	54
23-24	DT41/23-24	45.1018	54
24-25	DT41/24-25	45.1019	54
25	DT41/25	45.1020	54

41 SERIES

ID CONDUIT OPENING 40.5-41.7 MM

cable/ pipe diameter	plug type	article number	plug length
blind	DT55/0	45.1400	66
10-12	DT55/10-12	45.1409	66
12-14	DT55/12-14	45.1410	66
14-16	DT55/14-16	45.1411	66
16-18	DT55/16-18	45.1412	66
18-20	DT55/18-20	45.1413	66
20-22	DT55/20-22	45.1414	66
22-24	DT55/22-24	45.1415	66
24-26	DT55/24-26	45.1416	66
26-28	DT55/26-28	45.1417	66
28-30	DT55/28-30	45.1418	66
30-31	DT55/30-31	45.1419	66
31-32	DT55/31-32	45.1420	66
32-33	DT55/32-33	45.1421	66
33-34	DT55/33-34	45.1422	66
34	DT55/34	45.1423	66

55 SERIES

ID CONDUIT OPENING 54-55.7 MM

SLIPSIL® SEALING PLUGS: THE NEW GENERATION

OVERVIEW OF SERIES FOR SINGLE SEALING PLUGS

PLUG SERIES	CONDUIT SLEEVE	PLUG LENGTH	PIPE DIAMETER	COVERING CSD SERIES
25(.5)	25.0 - 26.0	54	5 - 12	25.6
27	26.5 - 27.6	54	5 - 15	27.3, 27.6
28	27.5 - 28.5	54	5 - 15	28.4
30	29.5 - 30.5	54	5 - 16	30
32	31.5 - 32.5	54	5 - 16	32
34	33.5 - 34.5	54	5 - 18	33.6
35	34.5 - 35.7	54	5 - 20	35, 35.7
37	36.5 - 37.7	54	5 - 20	36.5, 37.2
40	39.5 - 40.7	54	5 - 22	40
41	40.5 - 41.7	54	5 - 25	41.1, 41.6
43	42.5 - 43.7	54	5 - 28	43.6
50(.5)	50.0 - 51.3	66	10 - 32	50, 51.3
53	52.0 - 53.7	66	10 - 34	52.5, 52.9, 53.7
55	54.0 - 55.7	66	10 - 34	54,5
57	56.0 - 57.7	66	14 - 40	57
60	59.0 - 60.7	66	14 - 40	60
62	61.0 - 62.7	66	14 - 40	62.3
67	66.0 - 67.7	66	22 - 50	67.1
68	67.0 - 68.7	66	22 - 50	67.9, 68.6
70	69.0 - 70.7	66	22 - 50	70
75	74.0 - 75.7	66	22 - 50	75
78	77.0 - 78.7	66	22 - 50	77.9
80	79.0 - 80.7	66	28 - 60	80, 80.7
82	81.0 - 82.7	66	28 - 60	81.7, 82.5
90	89.0 - 90.7	66	40 - 64	90
94	93.0 - 94.7	66	40 - 64	94
97	96.0 - 97.7	66	40 - 64	97,2
100	99.0 - 100.7	66	40 - 75	100
102	101.0 - 102.7	66	40 - 75	102.3
103	102.0 - 103.7	66	40 - 75	103.6
105	104.0 - 105.7	66	40 - 75	105.3
107	106.0 - 107.7	66	40 - 75	107.1
110	109.0 - 110.7	66	48 - 80	110
118(.5)	117.5 - 119.2	66	60 - 90	118.6
122	121.0 - 122.7	66	60 - 92	122.2
125	124.0 - 125.7	66	60 - 92	125
128	127.0 - 128.7	66	60 - 92	128.1
131(.5)	130.5 - 132.2	66	60 - 92	131.7
146	145.0 - 146.7	79	88 - 120	146.3
150	149.0 - 150.7	79	88 - 125	150
152	151.0 - 152.7	79	88 - 125	152
154	153.0 - 154.7	79	88 - 125	154.1
156	155.0 - 156.7	79	88 - 125	156.2
160	159.0 - 160.7	79	88 - 125	159.3, 160
190	189.0 - 190.7	79	110-160	190,2
200	199.0 - 200.7	79	110-160	200
203	202.0 - 203.7	79	110-168	202,7
207	206.0 - 207.7	79	110-168	207,3

To select the right type of sealing plug, look for the plug series to be used on the basis of the outer diameter of the service pipe. Then make a choice for the plug type in the table of the selected plug series.

For instance: a copper pipe of 42 mm OD has to be ducted. Select the plug series on the basis of the ID of the conduit sleeve to be used and the OD of the ducted pipe (67 up to 107 can be your choice). When a conduit sleeve 88.9x3.2 mm (ID = 82.5 mm) will be used a sealing plug 82/42-44 is the right choice. If a 54 mm OD copper pipe has to be ducted through a sleeve with an ID of 107.1 mm, plug type 107/54-56 has to be selected. See the tables of the series 82 and 107 on pages 18 and 20.

Note: the sealing plugs with a thin wall (like for instance 53/34) are not easy to install in undersized conduit openings. It is advisable to select a larger plug series (for instance 60/34-36).

SLIPSIL® SEALING PLUGS: THE NEW GENERATION

TABLES FOR SINGLE SEALING PLUGS

cable/ pipe diameter	plug type	article number	plug length
blind	25/0	40.0100	54
5-6	25/5-6	40.0105	54
6-7	25/6-7	40.0106	54
7-8	25/7-8	40.0107	54
8-9	25/8-9	40.0108	54
9-10	25/9-10	40.0109	54
10-11	25/10-11	40.0110	54
11-12	25/11-12	40.0111	54
12	25/12	40.0112	54

COVERS CSD SERIES 25.6

25 SERIES
ID CONDUIT OPENING 25-26 MM

cable/ pipe diameter	plug type	article number	plug length
blind	27/0	40.0200	54
5-6	27/5-6	40.0205	54
6-7	27/6-7	40.0206	54
7-8	27/7-8	40.0207	54
8-9	27/8-9	40.0208	54
9-10	27/9-10	40.0209	54
10-11	27/10-11	40.0210	54
11-12	27/11-12	40.0211	54
12-13	27/12-13	40.0212	54
13-14	27/13-14	40.0213	54
14-15	27/14-15	40.0214	54
15	27/15	40.0215	54

COVERS CSD SERIES 27.3, 27.6

27 SERIES
ID CONDUIT OPENING 26.5-27.6 MM

cable/ pipe diameter	plug type	article number	plug length
blind	28/0	40.0300	54
5-6	28/5-6	40.0305	54
6-7	28/6-7	40.0306	54
7-8	28/7-8	40.0307	54
8-9	28/8-9	40.0308	54
9-10	28/9-10	40.0309	54
10-11	28/10-11	40.0310	54
11-12	28/11-12	40.0311	54
12-13	28/12-13	40.0312	54
13-14	28/13-14	40.0313	54
14-15	28/14-15	40.0314	54
15	28/15	40.0315	54

COVERS CSD SERIES 28.4

28 SERIES
ID CONDUIT OPENING 27.5-28.5 MM

cable/ pipe diameter	plug type	article number	plug length
blind	30/0	40.0400	54
5-6	30/5-6	40.0405	54
6-7	30/6-7	40.0406	54
7-8	30/7-8	40.0407	54
8-9	30/8-9	40.0408	54
9-10	30/9-10	40.0409	54
10-12	30/10-11	40.0410	54
11-12	30/11-12	40.0411	54
12-13	30/12-13	40.0412	54
13-14	30/13-14	40.0413	54
14-15	30/14-15	40.0414	54
15-16	30/15-16	40.0415	54
16	30/16	40.0416	54

COVERS CSD SERIES 30

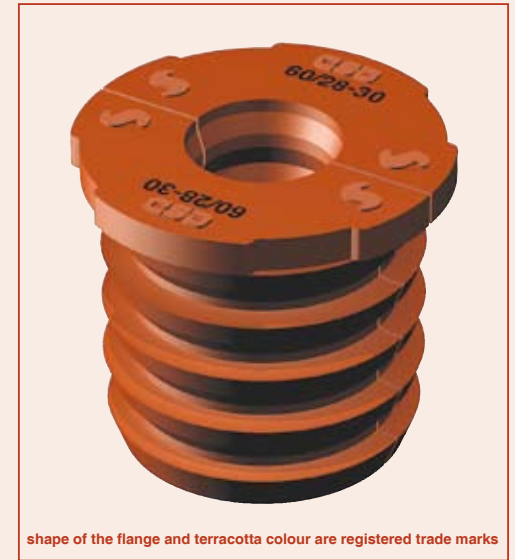
30 SERIES
ID CONDUIT OPENING 29.5-30.5 MM

SLIPSIL® SEALING PLUGS: THE NEW GENERATION

The new generation CSD sealing plugs manufactured by Beele Engineering under the trade name SLIPSIL® offers a substantial technical improvement with regard to ease of installation, sealing capacity and tolerances compared to the existing CSD sealing plugs. Numerous tests have been carried out proving that - provided the plugs are sufficiently lubricated - most of the plugs can be installed just by hand. This has been made possible by an engineered redesign of the inside and outside profiling of SLIPSIL® plugs.

LUBRICATE AND PUSH: THE PLUG SLIDES IN

The new SLIPSIL® plugs have an aesthetic and well recognizable appearance. The plugs are clearly marked with the CSD logo and the SLIPSIL mark on the flange. Extra feature for recognition is the shape of the flange. The specific terracotta colour of the SLIPSIL® plugs is unique for this product line. In this way the origin of the sealing plug can easily be determined, even after installation.



shape of the flange and terracotta colour are registered trade marks

SLIPSIL® SEALING PLUGS ARE OF HIGHEST QUALITY

For manufacturing SLIPSIL® plugs use is made of a high quality rubber grade. NOFIRNO® rubber has excellent weathering properties, UV and ozone resistance and long term behaviour. Service life of the plugs easily exceeds 50 years under normal environmental conditions. The plugs can be used in a very wide temperature range. Even at low temperatures down to -50° C the rubber stays flexible and does not harden excessively as other rubber types will do. This guarantees tightness even at low temperatures. The rubber can also be used in applications up to +180° C.

A single rubber grade is now capable of satisfying almost all sealing conditions. Sealing systems are safety devices. Only highest quality can do the job, not only when newly installed but also after a long service life. With SLIPSIL® plugs this safety is guaranteed for a very long time!



SAFE FOR SURE

SLIPSIL® sealing plugs are made of NOFIRNO® fire resistant rubber, our most superior rubber grade. This rubber is compounded under special conditions in our factory to obtain the outstanding properties for use in a wide variety of applications.

SLIPSIL® SEALING PLUGS: THE NEW GENERATION

SLIPSIL® multi-sealing plugs consist of two or four equal parts, so that they can be installed after the cables or pipes have been laid. The multi-plugs are specially developed for hydraulic and pneumatic systems in which same diameter pipes are used. Application of SLIPSIL® multi-sealing plugs avoids the need of spreading the pipes out to make single penetrations for each of the pipes. This saves a lot of space and also a lot of extra workmanship. The actual sealing of the cable or pipe conduit is effected by pushing the parts of the SLIPSIL® multi-sealing plug between the ducted pipes and the wall of the conduit sleeve. Tooling, specially for the 4 and 5 holes plugs, is very expensive. For this reason we manufacture these only when larger series are to be supplied. Check the tables for availability.

6-7	41/2x6-7	40.1021	54
9-10	41/2x9-10	40.1024	54
10-11	41/2x10-11	40.1025	54
6-7	43/2x6-7	40.1131	54
6-7	50/2x6-7	40.1231	66
7-8	50/2x7-8	40.1232	66
8-9	50/2x8-9	40.1233	66
9-10	50/2x9-10	40.1234	66
10-11	50/2x10-11	40.1235	66
12-13	50/2x12-13	40.1237	66
20-22	68/2x20-21	40.1943	66
22-24	68/2x22-23	40.1944	66
13-14	80/2x13-14	40.2335	66
15-16	80/2x15-16	40.2337	66
16-17	80/2x16-17	40.2338	66
22-23	80/2x22-23	40.2343	66
22-24	82/2x22-23	40.2443	66
6-7	41/3x6-7	40.1141	54
6-7	50/3x6-7	40.1241	66
12-13	50/3x12-13	40.1247	66
15-16	80/3x15-16	40.2355	66



SLIPSIL® SEALING PLUGS: THE NEW GENERATION

TABLES FOR SINGLE SEALING PLUGS

cable/ pipe diameter	plug type	article number	plug length
blind	32/0	40.0500	54
5-6	32/5-6	40.0505	54
6-7	32/6-7	40.0506	54
7-8	32/7-8	40.0507	54
8-9	32/8-9	40.0508	54
9-10	32/9-10	40.0509	54
10-11	32/10-11	40.0510	54
11-12	32/11-12	40.0511	54
12-13	32/12-13	40.0512	54
13-14	32/13-14	40.0513	54
14-15	32/14-15	40.0514	54
15-16	32/15-16	40.0515	54
16	32/16	40.0516	54

COVERS CSD SERIES 32

32 SERIES
ID CONDUIT OPENING 31.5-32.5 MM

cable/ pipe diameter	plug type	article number	plug length
blind	34/0	40.0600	54
5-6	34/5-6	40.0605	54
6-7	34/6-7	40.0606	54
7-8	34/7-8	40.0607	54
8-9	34/8-9	40.0608	54
9-10	34/9-10	40.0609	54
10-11	34/10-11	40.0610	54
11-12	34/11-12	40.0611	54
12-13	34/12-13	40.0612	54
13-14	34/13-14	40.0613	54
14-15	34/14-15	40.0614	54
15-16	34/15-16	40.0615	54
16-17	34/16-17	40.0616	54
17-18	34/17-18	40.0617	54
18	34/18	40.0618	54

COVERS CSD SERIES 33.6

34 SERIES
ID CONDUIT OPENING 33.5-34.5 MM

cable/ pipe diameter	plug type	article number	plug length
blind	35/0	40.0700	54
5-6	35/5-6	40.0705	54
6-7	35/6-7	40.0706	54
7-8	35/7-8	40.0707	54
8-9	35/8-9	40.0708	54
9-10	35/9-10	40.0709	54
10-11	35/10-11	40.0710	54
11-12	35/11-12	40.0711	54
12-13	35/12-13	40.0712	54
13-14	35/13-14	40.0713	54
14-15	35/14-15	40.0714	54
15-16	35/15-16	40.0715	54
16-17	35/16-17	40.0716	54
17-18	35/17-18	40.0717	54
18-19	35/18-19	40.0718	54
19-20	35/19-20	40.0719	54
20	35/20	40.0720	54

COVERS CSD SERIES 35, 35.7

35 SERIES
ID CONDUIT OPENING 34.5-35.7 MM

cable/ pipe diameter	plug type	article number	plug length
blind	37/0	40.0800	54
5-6	37/5-6	40.0805	54
6-7	37/6-7	40.0806	54
7-8	37/7-8	40.0807	54
8-9	37/8-9	40.0808	54
9-10	37/9-10	40.0809	54
10-11	37/10-11	40.0810	54
11-12	37/11-12	40.0811	54
12-13	37/12-13	40.0812	54
13-14	37/13-14	40.0813	54
14-15	37/14-15	40.0814	54
15-16	37/15-16	40.0815	54
16-17	37/16-17	40.0816	54
17-18	37/17-18	40.0817	54
18-19	37/18-19	40.0818	54
19-20	37/19-20	40.0819	54
20	37/20	40.0820	54

COVERS CSD SERIES 36.5, 37.2

37 SERIES
ID CONDUIT OPENING 36.5-37.7 MM

SLIPSIL® SEALING PLUGS: THE NEW GENERATION

TABLES FOR SINGLE SEALING PLUGS

cable/ pipe diameter	plug type	article number	plug length
blind	40/0	40.0900	54
5-6	40/5-6	40.0905	54
6-7	40/6-7	40.0906	54
7-8	40/7-8	40.0907	54
8-9	40/8-9	40.0908	54
9-10	40/9-10	40.0909	54
10-11	40/10-11	40.0910	54
11-12	40/11-12	40.0911	54
12-14	40/12-14	40.0912	54
14-16	40/14-16	40.0913	54
16-18	40/16-18	40.0914	54
18-20	40/18-20	40.0915	54
20-21	40/20-21	40.0916	54
21-22	40/21-22	40.0917	54
22	40/22	40.0918	54

COVERS CSD SERIES 40

40 SERIES

ID CONDUIT OPENING 39.5-40.7 MM

cable/ pipe diameter	plug type	article number	plug length
blind	41/0	40.1000	54
5-6	41/5-6	40.1005	54
6-7	41/6-7	40.1006	54
7-8	41/7-8	40.1007	54
8-9	41/7-8	40.1008	54
9-10	41/9-10	40.1009	54
10-11	41/10-11	40.1010	54
11-12	41/11-12	40.1011	54
12-14	41/12-14	40.1012	54
14-16	41/14-16	40.1013	54
16-18	41/16-18	40.1014	54
18-20	41/18-20	40.1015	54
20-22	41/20-22	40.1016	54
22-23	41/22-23	40.1017	54
23-24	41/23-24	40.1018	54
24-25	41/24-25	40.1019	54
25	41/25	40.1020	54

COVERS CSD SERIES 41.1, 41.6

41 SERIES

ID CONDUIT OPENING 40.5-41.7 MM

cable/ pipe diameter	plug type	article number	plug length
blind	43/0	40.1100	54
5-6	43/5-6	40.1005	54
6-7	43/6-7	40.1006	54
7-8	43/7-8	40.1007	54
8-9	43/7-8	40.1008	54
9-10	43/9-10	40.1009	54
10-11	43/10-12	40.1110	54
12-14	43/12-14	40.1111	54
14-16	43/14-16	40.1112	54
16-18	43/16-18	40.1113	54
18-20	43/18-20	40.1114	54
20-22	43/20-22	40.1115	54
22-24	43/22-24	40.1116	54
24-25	43/24-25	40.1117	54
25-26	43/25-26	40.1118	54
26-27	43/26-27	40.1119	54
27-28	43/27-28	40.1120	54
28	43/28	40.1121	54

COVERS CSD SERIES 43.6

43 SERIES

ID CONDUIT OPENING 42.5-43.7 MM

cable/ pipe diameter	plug type	article number	plug length
blind	50/0	40.1200	66
10-12	50/10-12	40.1209	66
12-14	50/12-14	40.1210	66
14-16	50/14-16	40.1211	66
16-18	50/16-18	40.1212	66
18-20	50/18-20	40.1213	66
20-22	50/20-22	40.1214	66
22-24	50/22-24	40.1215	66
24-26	50/24-26	40.1216	66
26-28	50/26-28	40.1217	66
28-29	50/28-29	40.1218	66
29-30	50/29-30	40.1219	66
30-31	50/30-31	40.1220	66
31-32	50/31-32	40.1221	66
32	50/32	40.1222	66

COVERS CSD SERIES 50, 51.3

50 SERIES

ID CONDUIT OPENING 50-51.2 MM

SLIPSIL® SEALING PLUGS: THE NEW GENERATION

TABLES FOR SINGLE SEALING PLUGS

cable/ pipe diameter	plug type	article number	plug length
blind	190/0	40.4500	79
110-112	190/110	40.4520	79
114-116	190/114	40.4523	79
125-127	190/125	40.4528	79
133-135	190/133	40.4531	79
139-141	190/139	40.4533	79
142-144	190/142	40.4534	79
153-155	190/153	40.4541	79
159-161	190/159	40.4543	79

COVERS CSD SERIES 190.2

190 SERIES

ID CONDUIT OPENING 189-190.7 MM

cable/ pipe diameter	plug type	article number	plug length
blind	200/0	40.4600	79
110-112	200/110	40.4620	79
114-116	200/114	40.4623	79
120-122	200/120	40.4626	79
125-127	200/125	40.4628	79
133-135	200/133	40.4631	79
139-141	200/139	40.4633	79
159-161	200/159	40.4643	79

COVERS CSD SERIES 200

200 SERIES

ID CONDUIT OPENING 199-200.7 MM

cable/ pipe diameter	plug type	article number	plug length
blind	203/0	40.4700	79
110-112	203/110	40.4720	79
114-116	203/114	40.4723	79
125-127	203/125	40.4728	79
133-135	203/133	40.4731	79
139-141	203/139	40.4733	79
141-143	203/141	40.4734	79
159-161	203/159	40.4743	79
168-170	203/168	40.4748	79

COVERS CSD SERIES 202.7

203 SERIES

ID CONDUIT OPENING 202-202.7 MM

cable/ pipe diameter	plug type	article number	plug length
blind	207/0	40.4800	79
110-112	207/110	40.4820	79
114-116	207/114	40.4823	79
125-127	207/125	40.4828	79
133-135	207/133	40.4831	79
139-141	207/139	40.4833	79
159-161	207/159	40.4843	79
168-170	207/168	40.4848	79

COVERS CSD SERIES 207.3

207 SERIES

ID CONDUIT OPENING 206-207.7 MM

SLIPSIL® SEALING PLUGS: THE NEW GENERATION

TABLES FOR SINGLE SEALING PLUGS

cable/ pipe diameter	plug type	article number	plug length
blind	152/0	40.4100	79
88-90	152/88-90	40.4120	79
90-92	152/90-92	40.4121	79
92-94	152/92-94	40.4122	79
94-96	152/94-96	40.4123	79
96-98	152/96-98	40.4124	79
98-100	152/98-100	40.4125	79
100-102	152/100-102	40.4126	79
102-104	152/102-104	40.4127	79
104-106	152/104-106	40.4128	79
106-108	152/106-108	40.4129	79
108-110	152/108-110	40.4130	79
110-112	152/110-112	40.4131	79
112-114	152/112-114	40.4132	79
114-116	152/114-116	40.4133	79
116-118	152/116-118	40.4134	79
118-120	152/118-120	40.4135	79
120-122	152/120-122	40.4136	79
122-124	152/122-124	40.4137	79
124-125	152/124-125	40.4138	79
125	152/125	40.4139	79

152 SERIES

ID conduit opening 151-152.7 MM

cable/ pipe diameter	plug type	article number	plug length
blind	154/0	40.4200	79
88-90	154/88-90	40.4220	79
90-92	154/90-92	40.4221	79
92-94	154/92-94	40.4222	79
94-96	154/94-96	40.4223	79
96-98	154/96-98	40.4224	79
98-100	154/98-100	40.4225	79
100-102	154/100-102	40.4226	79
102-104	154/102-104	40.4227	79
104-106	154/104-106	40.4228	79
106-108	154/106-108	40.4229	79
108-110	154/108-110	40.4230	79
110-112	154/110-112	40.4231	79
112-114	154/112-114	40.4232	79
114-116	154/114-116	40.4233	79
116-118	154/116-118	40.4234	79
118-120	154/118-120	40.4235	79
120-122	154/120-122	40.4236	79
122-124	154/122-124	40.4237	79
124-125	154/124-125	40.4238	79
125	154/125	40.4239	79

154 SERIES

ID conduit opening 153-154.7 MM

cable/ pipe diameter	plug type	article number	plug length
blind	156/0	40.4300	79
88-90	156/88-90	40.4320	79
90-92	156/90-92	40.4321	79
92-94	156/92-94	40.4322	79
94-96	156/94-96	40.4323	79
96-98	156/96-98	40.4324	79
98-100	156/98-100	40.4325	79
100-102	156/100-102	40.4326	79
102-104	156/102-104	40.4327	79
104-106	156/104-106	40.4328	79
106-108	156/106-108	40.4329	79
108-110	156/108-110	40.4330	79
110-112	156/110-112	40.4331	79
112-114	156/112-114	40.4332	79
114-116	156/114-116	40.4333	79
116-118	156/116-118	40.4334	79
118-120	156/118-120	40.4335	79
120-122	156/120-122	40.4336	79
122-124	156/122-124	40.4337	79
124-125	156/124-125	40.4338	79
125	156/125	40.4339	79

156 SERIES

ID conduit opening 155-156.7 MM

cable/ pipe diameter	plug type	article number	plug length
blind	160/0	40.4400	79
88-90	160/88-90	40.4420	79
90-92	160/90-92	40.4421	79
92-94	160/92-94	40.4422	79
94-96	160/94-96	40.4423	79
96-98	160/96-98	40.4424	79
98-100	160/98-100	40.4425	79
100-102	160/100-102	40.4426	79
102-104	160/102-104	40.4427	79
104-106	160/104-106	40.4428	79
106-108	160/106-108	40.4429	79
108-110	160/108-110	40.4430	79
110-112	160/110-112	40.4431	79
112-114	160/112-114	40.4432	79
114-116	160/114-116	40.4433	79
116-118	160/116-118	40.4434	79
118-120	160/118-120	40.4435	79
120-122	160/120-122	40.4436	79
122-124	160/122-124	40.4437	79
124-125	160/124-125	40.4438	79
125	160/125	40.4439	79

160 SERIES

ID conduit opening 159-160.7 MM

SLIPSIL® SEALING PLUGS: THE NEW GENERATION

TABLES FOR SINGLE SEALING PLUGS

cable/ pipe diameter	plug type	article number	plug length
blind	53/0	40.1300	66
10-12	53/10-12	40.1309	66
12-14	53/12-14	40.1310	66
14-16	53/14-16	40.1311	66
16-18	53/16-18	40.1312	66
18-20	53/18-20	40.1313	66
20-22	53/20-22	40.1314	66
22-24	53/22-24	40.1315	66
24-26	53/24-26	40.1316	66
26-28	53/26-28	40.1317	66
28-30	53/28-30	40.1318	66
30-31	53/30-31	40.1319	66
31-32	53/31-32	40.1320	66
32-33	53/32-33	40.1321	66
33-34	53/33-34	40.1322	66
34	53/34	40.1323	66

COVERS CSD SERIES 52.5, 52.9, 53.7

53 SERIES

ID conduit opening 52-53.7 MM

cable/ pipe diameter	plug type	article number	plug length
blind	55/0	40.1400	66
10-12	55/10-12	40.1409	66
12-14	55/12-14	40.1410	66
14-16	55/14-16	40.1411	66
16-18	55/16-18	40.1412	66
18-20	55/18-20	40.1413	66
20-22	55/20-22	40.1414	66
22-24	55/22-24	40.1415	66
24-26	55/24-26	40.1416	66
26-28	55/26-28	40.1417	66
28-30	55/28-30	40.1418	66
30-31	55/30-31	40.1419	66
31-32	55/31-32	40.1420	66
32-33	55/32-33	40.1421	66
33-34	55/33-34	40.1422	66
34	55/34	40.1423	66

COVERS CSD SERIES 54.5

55 SERIES

ID conduit opening 54-55.7 MM

cable/ pipe diameter	plug type	article number	plug length
blind	57/0	40.1500	66
14-16	57/14-16	40.1511	66
16-18	57/16-18	40.1512	66
18-20	57/18-20	40.1513	66
20-22	57/20-22	40.1514	66
22-24	57/22-24	40.1515	66
24-26	57/24-26	40.1516	66
26-28	57/26-28	40.1517	66
28-30	57/28-30	40.1518	66
30-32	57/30-32	40.1519	66
32-34	57/32-34	40.1520	66
34-36	57/34-36	40.1521	66
36-37	57/36-37	40.1522	66
37-38	57/37-38	40.1523	66
38-39	57/38-39	40.1524	66
38-40	57/39-40	40.1525	66
40	57/40	40.1526	66

COVERS CSD SERIES 57

57 SERIES

ID conduit opening 56-57.7 MM

cable/ pipe diameter	plug type	article number	plug length
blind	60/0	40.1600	66
14-16	60/14-16	40.1611	66
16-18	60/16-18	40.1612	66
18-20	60/18-20	40.1613	66
20-22	60/20-22	40.1614	66
22-24	60/22-24	40.1615	66
24-26	60/24-26	40.1616	66
26-28	60/26-28	40.1617	66
28-30	60/28-30	40.1618	66
30-32	60/30-32	40.1619	66
32-34	60/32-34	40.1620	66
34-36	60/34-36	40.1621	66
36-37	60/36-37	40.1622	66
37-38	60/37-38	40.1623	66
38-39	60/38-39	40.1624	66
38-40	60/39-40	40.1625	66
40	60/40	40.1626	66

COVERS CSD SERIES 60

60 SERIES

ID conduit opening 59-60.7 MM

SLIPSIL® SEALING PLUGS: THE NEW GENERATION

TABLES FOR SINGLE SEALING PLUGS

cable/ pipe diameter	plug type	article number	plug length
blind	62/0	40.1700	66
14-16	62/14-16	40.1711	66
16-18	62/16-18	40.1712	66
18-20	62/18-20	40.1713	66
20-22	62/20-22	40.1714	66
22-24	62/22-24	40.1715	66
24-26	62/24-26	40.1716	66
26-28	62/26-28	40.1717	66
28-30	62/28-30	40.1718	66
30-32	62/30-32	40.1719	66
32-34	62/32-34	40.1720	66
34-36	62/34-36	40.1721	66
36-37	62/36-37	40.1722	66
37-38	62/37-38	40.1723	66
38-39	62/38-39	40.1724	66
38-40	62/39-40	40.1725	66
40	62/40	40.1726	66

COVERS CSD SERIES 62.3

62 SERIES

ID CONDUIT OPENING 61-62.7 MM

cable/ pipe diameter	plug type	article number	plug length
blind	67/0	40.1800	66
22-24	67/22-24	40.1815	66
24-26	67/24-26	40.1816	66
26-28	67/26-28	40.1817	66
28-30	67/28-30	40.1818	66
30-32	67/30-32	40.1819	66
32-34	67/32-34	40.1820	66
34-36	67/34-36	40.1821	66
36-38	67/36-38	40.1822	66
38-40	67/38-40	40.1823	66
40-42	67/40-42	40.1824	66
42-44	67/42-44	40.1825	66
44-46	67/44-46	40.1826	66
46-48	67/46-48	40.1827	66
48-50	67/48-50	40.1828	66
50	67/50	40.1829	66

COVERS CSD SERIES 67.1

67 SERIES

ID CONDUIT OPENING 66-67.7 MM

cable/ pipe diameter	plug type	article number	plug length
blind	68/0	40.1900	66
22-24	68/22-24	40.1915	66
24-26	68/24-26	40.1916	66
26-28	68/26-28	40.1917	66
28-30	68/28-30	40.1918	66
30-32	68/30-32	40.1919	66
32-34	68/32-34	40.1920	66
34-36	68/34-36	40.1921	66
36-38	68/36-38	40.1922	66
38-40	68/38-40	40.1923	66
40-42	68/40-42	40.1924	66
42-44	68/42-44	40.1925	66
44-46	68/44-46	40.1926	66
46-48	68/46-48	40.1927	66
48-50	68/48-50	40.1928	66
50	68/50	40.1929	66

COVERS CSD SERIES 67.9, 68.6

68 SERIES

ID CONDUIT OPENING 67-68.7 MM

cable/ pipe diameter	plug type	article number	plug length
blind	70/0	40.2000	66
22-24	70/22-24	40.2015	66
24-26	70/24-26	40.2016	66
26-28	70/26-28	40.2017	66
28-30	70/28-30	40.2018	66
30-32	70/30-32	40.2019	66
32-34	70/32-34	40.2020	66
34-36	70/34-36	40.2021	66
36-38	70/36-38	40.2022	66
38-40	70/38-40	40.2023	66
40-42	70/40-42	40.2024	66
42-44	70/42-44	40.2025	66
44-46	70/44-46	40.2026	66
46-48	70/46-48	40.2027	66
48-50	70/48-50	40.2028	66
50	70/50	40.2029	66

COVERS CSD SERIES 70

70 SERIES

ID CONDUIT OPENING 69-70.7 MM

SLIPSIL® SEALING PLUGS: THE NEW GENERATION

TABLES FOR SINGLE SEALING PLUGS

cable/ pipe diameter	plug type	article number	plug length
blind	128/0	40.3700	66
60-62	128/60-62	40.3730	66
62-64	128/62-64	40.3731	66
64-66	128/64-66	40.3732	66
66-68	128/66-68	40.3733	66
68-70	128/68-70	40.3734	66
70-72	128/70-72	40.3735	66
72-74	128/72-74	40.3736	66
74-76	128/74-76	40.3737	66
76-78	128/76-78	40.3738	66
78-80	128/78-80	40.3739	66
80-82	128/80-82	40.3740	66
82-84	128/82-84	40.3741	66
84-86	128/84-86	40.3742	66
86-88	128/86-88	40.3743	66
88-90	128/88-90	40.3744	66
90-92	128/90-92	40.3745	66
92	128/92	40.3746	66

COVERS CSD SERIES 128.1

128 SERIES

ID CONDUIT OPENING 127-128.7 MM

cable/ pipe diameter	plug type	article number	plug length
blind	131/0	40.3800	66
60-62	131/60-62	40.3830	66
62-64	131/62-64	40.3831	66
64-66	131/64-66	40.3832	66
66-68	131/66-68	40.3833	66
68-70	131/68-70	40.3834	66
70-72	131/70-72	40.3835	66
72-74	131/72-74	40.3836	66
74-76	131/74-76	40.3837	66
76-78	131/76-78	40.3838	66
78-80	131/78-80	40.3839	66
80-82	131/80-82	40.3840	66
82-84	131/82-84	40.3841	66
84-86	131/84-86	40.3842	66
86-88	131/86-88	40.3843	66
88-90	131/88-90	40.3844	66
90-92	131/90-92	40.3845	66
92	131/92	40.3846	66

COVERS CSD SERIES 131.7

131 SERIES

ID CONDUIT OPENING 130.5-132.2 MM

cable/ pipe diameter	plug type	article number	plug length
blind	146/0	40.3900	79
88-90	146/88-90	40.3920	79
90-92	146/90-92	40.3921	79
92-94	146/92-94	40.3922	79
94-96	146/94-96	40.3923	79
96-98	146/96-98	40.3924	79
98-100	146/98-100	40.3925	79
100-102	146/100-102	40.3926	79
102-104	146/102-104	40.3927	79
104-106	146/104-106	40.3928	79
106-108	146/106-108	40.3929	79
108-110	146/108-110	40.3930	79
110-112	146/110-112	40.3931	79
112-114	146/112-114	40.3932	79
114-116	146/114-116	40.3933	79
116-118	146/116-118	40.3934	79
118-120	146/118-120	40.3935	79
120	146/120	40.3936	79

COVERS CSD SERIES 146.3

146 SERIES

ID CONDUIT OPENING 145-146.7 MM

cable/ pipe diameter	plug type	article number	plug length
blind	150/0	40.4000	79
88-90	150/88-90	40.4020	79
90-92	150/90-92	40.4021	79
92-94	150/92-94	40.4022	79
94-96	150/94-96	40.4023	79
96-98	150/96-98	40.4024	79
98-100	150/98-100	40.4025	79
100-102	150/100-102	40.4026	79
102-104	150/102-104	40.4027	79
104-106	150/104-106	40.4028	79
106-108	150/106-108	40.4029	79
108-110	150/108-110	40.4030	79
110-112	150/110-112	40.4031	79
112-114	150/112-114	40.4032	79
114-116	150/114-116	40.4033	79
116-118	150/116-118	40.4034	79
118-120	150/118-120	40.4035	79
120-122	150/120-122	40.4036	79
122-124	150/122-124	40.4037	79
124-125	150/124-125	40.4038	79
125	150/125	40.4039	79

150 SERIES

ID CONDUIT OPENING 149-150.7 MM

SLIPSIL® SEALING PLUGS: THE NEW GENERATION

TABLES FOR SINGLE SEALING PLUGS

cable/ pipe diameter	plug type	article number	plug length
blind	110/0	40.3300	66
48-50	110/48-50	40.3324	66
50-52	110/50-52	40.3325	66
52-54	110/52-54	40.3326	66
54-56	110/54-56	40.3327	66
56-58	110/56-58	40.3328	66
58-60	110/58-60	40.3329	66
60-62	110/60-62	40.3330	66
62-64	110/62-64	40.3331	66
64-66	110/64-66	40.3332	66
66-68	110/66-68	40.3333	66
68-70	110/68-70	40.3334	66
70-72	110/70-72	40.3335	66
72-74	110/72-74	40.3336	66
74-76	110/74-76	40.3337	66
76-78	110/76-78	40.3338	66
78-80	110/78-80	40.3339	66
80	110/80	40.3340	66

110 SERIES

ID conduit opening 109-110.7 mm

cable/ pipe diameter	plug type	article number	plug length
blind	118/0	40.3400	66
60-62	118/60-62	40.3430	66
62-64	118/62-64	40.3431	66
64-66	118/64-66	40.3432	66
66-68	118/66-68	40.3433	66
68-70	118/68-70	40.3434	66
70-72	118/70-72	40.3435	66
72-74	118/72-74	40.3436	66
74-76	118/74-76	40.3437	66
76-78	118/76-78	40.3438	66
78-80	118/78-80	40.3439	66
80-82	118/80-82	40.3440	66
82-84	118/82-84	40.3441	66
84-86	118/84-86	40.3442	66
86-88	118/86-88	40.3443	66
88-90	118/88-90	40.3444	66
90	118/90	40.3445	66

COVERS CSD SERIES 118.6

118 SERIES

ID conduit opening 117.5-119.2 mm

cable/ pipe diameter	plug type	article number	plug length
blind	122/0	40.3500	66
60-62	122/60-62	40.3530	66
62-64	122/62-64	40.3531	66
64-66	122/64-66	40.3532	66
66-68	122/66-68	40.3533	66
68-70	122/68-70	40.3534	66
70-72	122/70-72	40.3535	66
72-74	122/72-74	40.3536	66
74-76	122/74-76	40.3537	66
76-78	122/76-78	40.3538	66
78-80	122/78-80	40.3539	66
80-82	122/80-82	40.3540	66
82-84	122/82-84	40.3541	66
84-86	122/84-86	40.3542	66
86-88	122/86-88	40.3543	66
88-90	122/88-90	40.3544	66
90-92	122/90-92	40.3545	66
92	122/92	40.3546	66

COVERS CSD SERIES 122.2

122 SERIES

ID conduit opening 121-122.7 mm

cable/ pipe diameter	plug type	article number	plug length
blind	125/0	40.3600	66
60-62	125/60-62	40.3630	66
62-64	125/62-64	40.3631	66
64-66	125/64-66	40.3632	66
66-68	125/66-68	40.3633	66
68-70	125/68-70	40.3634	66
70-72	125/70-72	40.3635	66
72-74	125/72-74	40.3636	66
74-76	125/74-76	40.3637	66
76-78	125/76-78	40.3638	66
78-80	125/78-80	40.3639	66
80-82	125/80-82	40.3640	66
82-84	125/82-84	40.3641	66
84-86	125/84-86	40.3642	66
86-88	125/86-88	40.3643	66
88-90	125/88-90	40.3644	66
90-92	125/90-92	40.3645	66
92	125/92	40.3646	66

COVERS CSD SERIES 125

125 SERIES

ID conduit opening 124-125.7 mm

SLIPSIL® SEALING PLUGS: THE NEW GENERATION

TABLES FOR SINGLE SEALING PLUGS

cable/ pipe diameter	plug type	article number	plug length
blind	75/0	40.2100	66
22-24	75/22-24	40.2115	66
24-26	75/24-26	40.2116	66
26-28	75/26-28	40.2117	66
28-30	75/28-30	40.2118	66
30-32	75/30-32	40.2119	66
32-34	75/32-34	40.2120	66
34-36	75/34-36	40.2121	66
36-38	75/36-38	40.2122	66
38-40	75/38-40	40.2123	66
40-42	75/40-42	40.2124	66
42-44	75/42-44	40.2125	66
44-46	75/44-46	40.2126	66
46-48	75/46-48	40.2127	66
48-50	75/48-50	40.2128	66
50	75/50	40.2129	66

COVERS CSD SERIES 75

75 SERIES

ID conduit opening 74-75.7 mm

cable/ pipe diameter	plug type	article number	plug length
blind	78/0	40.2200	66
22-24	78/22-24	40.2215	66
24-26	78/24-26	40.2216	66
26-28	78/26-28	40.2217	66
28-30	78/28-30	40.2218	66
30-32	78/30-32	40.2219	66
32-34	78/32-34	40.2220	66
34-36	78/34-36	40.2221	66
36-38	78/36-38	40.2222	66
38-40	78/38-40	40.2223	66
40-42	78/40-42	40.2224	66
42-44	78/42-44	40.2225	66
44-46	78/44-46	40.2226	66
46-48	78/46-48	40.2227	66
48-50	78/48-50	40.2228	66
50	78/50	40.2229	66

COVERS CSD SERIES 77.9

78 SERIES

ID conduit opening 77-78.7 mm

cable/ pipe diameter	plug type	article number	plug length
blind	80/0	40.2300	66
28-30	80/28-30	40.2318	66
30-32	80/30-32	40.2319	66
32-34	80/32-34	40.2320	66
34-36	80/34-36	40.2321	66
36-38	80/36-38	40.2322	66
38-40	80/38-40	40.2323	66
40-42	80/40-42	40.2324	66
42-44	80/42-44	40.2325	66
44-46	80/44-46	40.2326	66
46-48	80/46-48	40.2327	66
48-50	80/48-50	40.2328	66
50-52	80/50-52	40.2329	66
52-54	80/52-54	40.2330	66
54-56	80/54-56	40.2331	66
56-58	80/56-58	40.2332	66
58-60	80/58-60	40.2333	66
60	80/60	40.2334	66

COVERS CSD SERIES 80, 80.7

80 SERIES

ID conduit opening 79-80.7 mm

cable/ pipe diameter	plug type	article number	plug length
blind	82/0	40.2400	66
28-30	82/28-30	40.2418	66
30-32	82/30-32	40.2419	66
32-34	82/32-34	40.2420	66
34-36	82/34-36	40.2421	66
36-38	82/36-38	40.2422	66
38-40	82/38-40	40.2423	66
40-42	82/40-42	40.2424	66
42-44	82/42-44	40.2425	66
44-46	82/44-46	40.2426	66
46-48	82/46-48	40.2427	66
48-50	82/48-50	40.2428	66
50-52	82/50-52	40.2429	66
52-54	82/52-54	40.2430	66
54-56	82/54-56	40.2431	66
56-58	82/56-58	40.2432	66
58-60	82/58-60	40.2433	66
60	82/60	40.2434	66

COVERS CSD SERIES 81.7, 82.5

82 SERIES

ID conduit opening 81-82.7 mm

SLIPSIL® SEALING PLUGS: THE NEW GENERATION

TABLES FOR SINGLE SEALING PLUGS

cable/ pipe diameter	plug type	article number	plug length
blind	90/0	40.2500	66
40-42	90/40-42	40.2520	66
42-44	90/42-44	40.2521	66
44-46	90/44-46	40.2522	66
46-48	90/46-48	40.2523	66
48-50	90/48-50	40.2524	66
50-52	90/50-52	40.2525	66
52-54	90/52-54	40.2526	66
54-56	90/54-56	40.2527	66
56-58	90/56-58	40.2528	66
58-60	90/58-60	40.2529	66
60-62	90/60-62	40.2530	66
62-64	90/62-64	40.2531	66
64	90/64	40.2532	66

COVERS CSD SERIES 90

90 SERIES
ID CONDUIT OPENING 89-90.7 MM

cable/ pipe diameter	plug type	article number	plug length
blind	94/0	40.2600	66
40-42	94/40-42	40.2620	66
42-44	94/42-44	40.2621	66
44-46	94/44-46	40.2622	66
46-48	94/46-48	40.2623	66
48-50	94/48-50	40.2624	66
50-52	94/50-52	40.2625	66
52-54	94/52-54	40.2626	66
54-56	94/54-56	40.2627	66
56-58	94/56-58	40.2628	66
58-60	94/58-60	40.2629	66
60-62	94/60-62	40.2630	66
62-64	90/62-64	40.2631	66
64	90/64	40.2632	66

COVERS CSD SERIES 94

94 SERIES
ID CONDUIT OPENING 93-94.7 MM

cable/ pipe diameter	plug type	article number	plug length
blind	97/0	40.2700	66
40-42	97/40-42	40.2720	66
42-44	97/42-44	40.2721	66
44-46	97/44-46	40.2722	66
46-48	97/46-48	40.2723	66
48-50	97/48-50	40.2724	66
50-52	97/50-52	40.2725	66
52-54	97/52-54	40.2726	66
54-56	97/54-56	40.2727	66
56-58	97/56-58	40.2728	66
58-60	97/58-60	40.2729	66
60-62	97/60-62	40.2730	66
62-64	97/62-64	40.2731	66
64	97/64	40.2732	66

COVERS CSD SERIES 97

97 SERIES
ID CONDUIT OPENING 96-97.7 MM

cable/ pipe diameter	plug type	article number	plug length
blind	100/0	40.2800	66
40-42	100/40-42	40.2820	66
42-44	100/42-44	40.2821	66
44-46	100/44-46	40.2822	66
46-48	100/46-48	40.2823	66
48-50	100/48-50	40.2824	66
50-52	100/50-52	40.2825	66
52-54	100/52-54	40.2826	66
54-56	100/54-56	40.2827	66
56-58	100/56-58	40.2828	66
58-60	100/58-60	40.2829	66
60-62	100/60-62	40.2830	66
62-64	100/62-64	40.2831	66
64-66	100/64-66	40.2832	66
66-68	100/66-68	40.2833	66
68-70	100/68-70	40.2834	66
70-72	100/70-72	40.2835	66
72-74	100/72-74	40.2836	66
74-75	100/74-75	40.2837	66
75	100/75	40.2838	66

100 SERIES
ID CONDUIT OPENING 99-100.7 MM

SLIPSIL® SEALING PLUGS: THE NEW GENERATION

TABLES FOR SINGLE SEALING PLUGS

cable/ pipe diameter	plug type	article number	plug length
blind	102/0	40.2900	66
40-42	102/40-42	40.2920	66
42-44	102/42-44	40.2921	66
44-46	102/44-46	40.2922	66
46-48	102/46-48	40.2923	66
48-50	102/48-50	40.2924	66
50-52	102/50-52	40.2925	66
52-54	102/52-54	40.2926	66
54-56	102/54-56	40.2927	66
56-58	102/56-58	40.2928	66
58-60	102/58-60	40.2929	66
60-62	102/60-62	40.2930	66
62-64	102/62-64	40.2931	66
64-66	102/64-66	40.2932	66
66-68	102/66-68	40.2933	66
68-70	102/68-70	40.2934	66
70-72	102/70-72	40.2935	66
72-74	102/72-74	40.2936	66
74-75	102/74-75	40.2937	66
75	102/75	40.2938	66

102 SERIES
ID CONDUIT OPENING 101-102.7 MM

cable/ pipe diameter	plug type	article number	plug length
blind	103/0	40.3000	66
40-42	103/40-42	40.3020	66
42-44	103/42-44	40.3021	66
44-46	103/44-46	40.3022	66
46-48	103/46-48	40.3023	66
48-50	103/48-50	40.3024	66
50-52	103/50-52	40.3025	66
52-54	103/52-54	40.3026	66
54-56	103/54-56	40.3027	66
56-58	103/56-58	40.3028	66
58-60	103/58-60	40.3029	66
60-62	103/60-62	40.3030	66
62-64	103/62-64	40.3031	66
64-66	103/64-66	40.3032	66
66-68	103/66-68	40.3033	66
68-70	103/68-70	40.3034	66
70-72	103/70-72	40.3035	66
72-74	103/72-74	40.3036	66
74-75	103/74-75	40.3037	66
75	103/75	40.3038	66

103 SERIES
ID CONDUIT OPENING 102-103.7 MM

cable/ pipe diameter	plug type	article number	plug length
blind	105/0	40.3100	66
40-42	105/40-42	40.3120	66
42-44	105/42-44	40.3121	66
44-46	105/44-46	40.3122	66
46-48	105/46-48	40.3123	66
48-50	105/48-50	40.3124	66
50-52	105/50-52	40.3125	66
52-54	105/52-54	40.3126	66
54-56	105/54-56	40.3127	66
56-58	105/56-58	40.3128	66
58-60	105/58-60	40.3129	66
60-62	105/60-62	40.3130	66
62-64	105/62-64	40.3131	66
64-66	105/64-66	40.3132	66
66-68	105/66-68	40.3133	66
68-70	105/68-70	40.3134	66
70-72	105/70-72	40.3135	66
72-74	105/72-74	40.3136	66
74-75	105/74-75	40.3137	66
75	105/75	40.3138	66

105 SERIES
ID CONDUIT OPENING 104-105.7 MM

cable/ pipe diameter	plug type	article number	plug length
blind	107/0	40.3200	66
40-42	107/40-42	40.3220	66
42-44	107/42-44	40.3221	66
44-46	107/44-46	40.3222	66
46-48	107/46-48	40.3223	66
48-50	107/48-50	40.3224	66
50-52	107/50-52	40.3225	66
52-54	107/52-54	40.3226	66
54-56	107/54-56	40.3227	66
56-58	107/56-58	40.3228	66
58-60	107/58-60	40.3229	66
60-62	107/60-62	40.3230	66
62-64	107/62-64	40.3231	66
64-66	107/64-66	40.3232	66
66-68	107/66-68	40.3233	66
68-70	107/68-70	40.3234	66
70-72	107/70-72	40.3235	66
72-74	107/72-74	40.3236	66
74-75	107/74-75	40.3237	66
75	107/75	40.3238	66

107 SERIES
ID CONDUIT OPENING 106-107.7 MM